

# CONFEPASO

**International Confederation of Paso Horse  
Breeders**

Equitation Rule Book  
for Young Men and Women Riders  
in Competition

CONFEPASO Headquarters  
Transversal 44, No. 99-36  
Santafé de Bogotá, COLOMBIA  
Telephone Nos.: 617.8294 / 613.2595 / 226.4536  
Fax No.: 613.2453  
Cellular Nos.: 033.237.7509 / 237.7510/ 237.7574

All Rights Reserved. Partial or entire reproduction of this document is prohibited without the permission of the CONFEPASO.

## INTRODUCTION

It was the decision of the Regular General Assembly of the members of **CONFEPASO**, the International Confederation of Paso Horse Breeders, held in Panama City on May 2-4, 1998 to produce and edit this Equitation Rule Book.

At this same meeting, it was stressed that the judges must fundamentally base their decisions on the performance, ability and quality of the young men and women riders as equestrians. In making their judgments, they should not consider the quality, reputation or importance of the mounts that the equestrians ride in the competitions.

The mission of editing the rule book was given to the **CONFEPASO President, Bernardo Vásquez Herrera** and to **José M. Laracuente**, the Ex-president of the Confederation and Delegate to the United States for the Confederation.

In order to comply with one of **CONFEPASO's** most important objectives, that of unifying competition rules in its member countries, we compiled the rules used in competitions in Venezuela, Colombia and the United States. Some of the articles from the **CONFEPASO** Rules for Competition were also applied.

**CONFEPASO** hereby authorizes this Equitation Rule Book for Young Men and Women Riders in Competition, which must be used in the World Cup (Mundial) and International horse shows, and is recommended for use in National horse shows.

# CONFEPASO

The International Confederation of Paso Horse Breeders, Inc. or **CONFEPASO**, is a non-profit corporation involving animal breeding, formed by affiliate countries with a common purpose.

The affiliate countries are: *Germany, Aruba, Colombia, Curaçao, the United States, Panama, Puerto Rico, the Dominican Republic, Switzerland and Venezuela*, represented by their respective Associations and/or Federations. One of their purposes is to host, participate in and regulate Paso Horse sports competitions, including equitation, at the international level.

# Equitation Rule Book

## Table of Contents

<b>Chapter I Horse Shows .....</b>	<b>1</b>
<b>Chapter II CONFEPASO and Affiliate Federations and Associations .....</b>	<b>5</b>
<b>Chapter III Riding Schools and Instructors.....</b>	<b>7</b>
<b>Chapter IV Registration and Competitors .....</b>	<b>9</b>
<b>Chapter V Divisions and Judgments.....</b>	<b>15</b>
<b>Chapter VI Paso Horse Equitation .....</b>	<b>23</b>
<b>Chapter VII Judges.....</b>	<b>29</b>
<b>Chapter VIII Prizes.....</b>	<b>32</b>
<b>Chapter IX Disciplinary Actions .....</b>	<b>33</b>
<b>General Characteristics of the Horse .....</b>	<b>35</b>

# Chapter I

## HORSE SHOWS

### Definitions:

1. **The World Cup (Mundial) Horse Shows:** are those competitions evaluated by **CONFEPASO** every two years with the participation of countries affiliated with the Confederation and organized by a representative Association or Federation of the affiliate country.
2. **International Horse Shows:** are those competitions evaluated by **CONFEPASO** with the participation of two or more affiliate Confederation countries by a representative Association or Federation of the affiliate country.
3. **National Horse Shows:** are those competitions hosted by a **CONFEPASO** affiliate country with the participation of representative Associations or Federations of the affiliate country.

### Article 1. The World Cup (Mundial) Horse Shows

These are competitions organized by **CONFEPASO** every two years which comply with the following requirements:

1. The organizers must be Federations or Associations affiliated with **CONFEPASO**.
2. They must be organized within the guidelines and regulations established by **CONFEPASO** for such purposes.
3. They must be held in countries where some member of **CONFEPASO** is incorporated.
4. The participating mounts must have a registration issued by a **CONFEPASO** affiliate Association or Federation and be registered in the different gaits and divisions covered in the rules.

5. The organizers must film the World Cup Horse Shows and all other activities related to it on video. Two copies of the filming must be submitted to **CONFEPASO** for its historical archives.
6. The Young Men and Women Equestrian World Cup Horse Shows will be held in the country and city approved by a resolution of **CONFEPASO**. The chosen city must have a spacious arena with appropriate sanitary conditions, structural integrity and public capacity during the realization of the event.

## **Article 2**

The Federation, Association, Board of Directors or Event Organizing Committee will offer the proper guarantees and mechanisms pertaining to the development and success of the competition, such as: a commitment to comply with the Rules, a place for the sessions, appropriate locations for the event, setting and following event schedules, trophy acquisition, security for the competitors and for the general public. They must also provide lodging and security for the horses that will be ridden in the competition. They must also procure the budget necessary to carry the event out to a satisfactory conclusion.

## **Article 3**

The Federation, Association, Board of Directors or Event Organizing Committee will name the members of a Horse Show Committee consisting of the following members:

- A) President: the president of the Federation or Association hosting the event.
- B) General Manager: a representative of the Association or Organizing Board and the highest authority over the event.
- C) Horse Show Director: a person who will direct the event and be responsible for the operation and efficiency of the Horse Show Committee.
- D) Two assistants: these two will take care of the competition documents and records, as well as the scores.
- E) Ring Master: the person who will control the entrance of participants into the arena and who will determine the order of the entries.
- F) Veterinarian: the person who will watch over and attend to

the animals participating in the event.

- G) Horse Show Announcer: someone recognized for his or her competence and impartiality.
- H) Medical Personnel: a group of doctors and paramedics who will attend to any emergency.

**Paragraph 1.** The Show Committee will be in charge of the event all the way from reviewing the participants' applications to make sure they are correct, to handing over the final scores signed by the judges to the Organizing Board to then be sent to **CONFEPASO** and the archives of the Federation or Association responsible for the competition, after being counter-signed with their signature.

**Paragraph 2.** In the case of acts of God or public mandate, the Federation, Association and/or Organizing Committee of the event will be allowed to make the decision to cancel the event. **CONFEPASO** must be informed of this decision for its approval. In such a case, the events judged up to the time of the cancellation will be valid and their scores will be recognized.

**Paragraph 3.** Attendance and participation in a horse show sponsored by **CONFEPASO** in any capacity, as spectator, exhibitor or collaborator, is a voluntary act taken by persons on their own behalf, at their own risk, and aware of any eventual harm that could befall them in the course of its exercise. This risk can only subsequently be assumed by working relationships with persons or entities different from those that organize the event. Consequently, the competition organization is not responsible for whatever may happen to the persons that participate in the event. The participants themselves are obligated to take any precautions necessary in order to avoid accidents and injury to their persons, their animals or their belongings. The show management is not responsible for thefts or damages caused to real or lawful persons during the execution of the event.

#### **Article 4.**

##### **Requirements for the Participation of the Horses in the Young Men and Women Equestrian World Cup and International Shows:**

- A. In order to be able to participate, each mount must be in optimal

physical condition. An optimal state of health is defined as that which allows it to perform the functions for which it is designed.

- B.** In order to compete, each mount must have a Genealogical Registration issued by the **CONFEPASO** affiliate Federation or Association which corresponds to the type of class in which it is to compete.
- C.** In order to sign up for an event, the horse owner must show the original application and health certificates in accordance with the requirements of the country hosting the competition.
- D.** Every owner and legal representative will complete and sign an entry form which will include information relevant to the registration of the mount, so that the horse may compete. Furthermore, the horse owner and/or certified legal representative, will report to **CONFEPASO**, its Show Directors, Judges, members or agents, other owners, employees and participants in the events, any damage or claims that could be caused by a mount during the events.
- E.** It is the obligation of the riders and the horse owners to acknowledge and accept these Rules and they must notify personnel under their charge, assistants, grooms, etc. that ignorance of the rules incorporated in this Rule Book is not cause for their non-compliance.

#### **F. FALSE STATEMENTS ON THE ENTRY FORMS**

Those participants who have submitted false statements on their documents and entry forms, and which have proven to be intentional and deceptive, in regard to themselves or their horses, (even if they were registered by their parents or guardians), will not be admitted into competition.

# Chapter II

## CONFEPASO AND AFFILIATE FEDERATIONS AND ASSOCIATIONS

### Article 5. Organization

There is an organic structure, at the international level, which directs and is responsible for the development of the World Cup Equestrian Shows and for the International Shows. It is composed of the International Confederation of Paso Horse Breeders, **CONFEPASO**, and of its associates, the National Federations and National Associations.

### Article 6. Functions

The governance of the Equitation Rules for Competition includes sufficient legal authority to maintain and support administrative and show regulations. In this way, the conceptual and procedural unity necessary for the competitors' participation and qualification will be maintained.

### Article 7. Powers

For the proper exercise of its functions, **CONFEPASO** has the power to regulate the sports equestrian activities. For this purpose, it possesses the following authority:

- A. To expedite and modify the Equitation Rule Book
- B. To create the World Cup and International Show calendar of events which includes the different existing classes according to their classification by member countries, cities and sites. In this way, it will be able to approve or deny the inclusion of new special or permanent classes.
- C. To serve as consulting agency in everything related to the Sport of Equitation, even in cases not mentioned in this Rule Book, and to offer collaboration required by its officials, for the benefit of the promotion of the equestrians at the

international level.

- D.** To act as judge or mediator in conflicts that may arise between affiliate Federations and Associations, the Organizing Committees, and other similar entities, whenever they relate to activities directed or coordinated by **CONFEPASO**.
- E.** To entirely regulate the judging and the qualification of the World Cup and International Show Riders, while coordinating the existing affiliate Federations and Associations, and any affiliates to be organized in the future, with the purpose of bringing together social groups devoted to this sport. These new groups will be governed by the statutes that their membership imposes. However, as has already been mentioned, they must follow these rules in their entirety as they affect judging and qualifying, in order to achieve adequate performance at the international level.

# Chapter III

## RIDING SCHOOLS AND INSTRUCTORS

### Article 8.

**CONFEPASO**, its affiliate Federations and Associations, as well as the Riding Schools, will be responsible for enforcing these rules and making sure that they are followed.

At the international level, all existing and future Riding Schools will be able to request horse show assistance for organizing competitions and for promoting competent instructors.

Every Federation and/or Association is authorized to create Riding Schools in their country.

### Article 9.

The Riding Schools that wish to compete in their country's national horse show must be enrolled members and recognized as such by their respective Federation and/or Association. (They need not be Association affiliates.) The participating Federations, Associations and Riding Schools are obligated to follow and make available these Rules and their established guidelines.

### Article 10.

**CONFEPASO**, its Federations and/or its Associations, are empowered to grant credentials to the participants.

The Riding Schools will be able to register under the name of their choice for the country's National Horse Show to which they belong, but only if they mention the Federation and/or Association in which they are members.

### Article 11.

Every existing Riding School must provide the following resources:

**Physical resources** or infrastructure; **material resources**, like

instructional materials, brochures, videos, etc.; **educational resources**, seminars, for example; **human resources**, that is, instructors competent to teach theory and practice, assisting personnel, grooms and various people with knowledge of first aid.

# Chapter IV

## REGISTRATION AND COMPETITORS

### Article 12.

Registration fees will be determined by the organization and there will be no right to refunds, not even if the rider or horse for any reason abstains from participating. Applications for entry will be made in writing fifteen (15) calendar days in advance, on forms provided by the Organization, subject to payment of the corresponding fees.

**Paragraph:** The Federations and/or Associations have the right to receive and accept applications and their cancellations not only when the official entry form is presented but also by such means as Fax machine and international or corporate consignments. The only condition is that the documents contain all of the required information.

### Article 13.

The entry forms will include enough information to correctly identify the competitors. They will include the following information:

- A) Full name
- B) Age (with a copy of the participant's birth certificate or other form of I.D. and passport)
- C) Identification number
- D) Sex
- E) Division in which he or she will compete
- F) Name of the country he or she represents
- G) Name of the country's Federation and/or Association which he or she represents

- H) Permanent address
- I) Telephone number
- J) Name, sex, breed type and registry number of the participant's mount

**Paragraph:** In the event that a registered horse is substituted, the competitor must give the event Organizer proper advance notice so that General Management can authorize said substitution.

#### **Article 14**

On the entry forms it must be noted that upon registering, the participant and his or her representative must demonstrate knowledge of the Rules and agree to abide by them.

#### **Article 15**

Minors will sign the entry form along with their parents and/or legal guardians, who must have full knowledge of these Rules.

#### **Article 16**

The Federation and/or Association organizing World Cup Horse Shows must have a group policy which protects the participants against personal injury.

#### **Article 17**

When a participant is misplaced in a class or division because of his or her age, the Technical Director in mutual agreement with the Judges will place him or her in the one to which he or she rightfully belongs.

#### **Article 18**

During the horse shows the participants may not exhibit trophies, medals, ribbons or pennants won in other competitions.

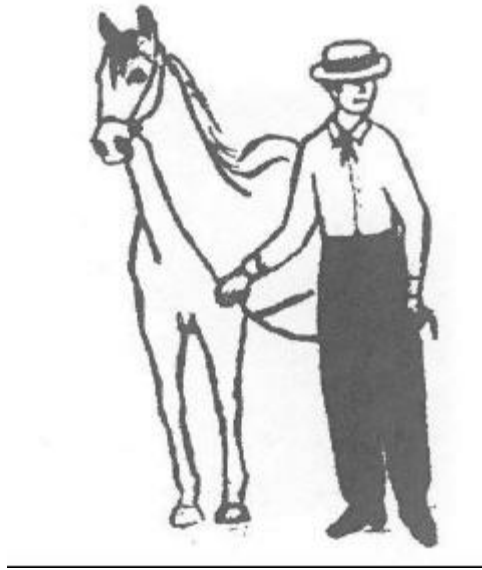
#### **Article 19**

The riders must enter the judges' circle with the identification number assigned to them by the Organizing Board, so to be able to identify all of the participants. This number will be used by the show

judges to record results.

## **Article 20**

### ***Dress Code for the participants, grooms and ring assistants:***



- A) Dark-colored leather boots. The boots must have a low heel, flat sole, and slip easily into the stirrups.
- B) Black or dark blue pants.
- C) White long-sleeved shirt with a collar. Under no circumstances will shirts with embroidery or colored stripes be accepted. The only acceptable marking will be the flag of the country or the logo of the Federation and/or Association represented by the competitor. The size of the flag or logo will be no larger than 10 X 10 centimeters.
- D) The use of a vest, black or dark blue full jacket or short jacket, is optional depending on the ruling of the country represented by the competitor.
- E) The use of a helmet is mandatory for riders up to 12 years of

age. The use of a hat over the protective helmet is permissible.

- F) The hat will be white or crème-colored with a black or white band. Any other type of hat is prohibited.
- G) The use of chaps is prohibited.

**Paragraph 1.** The competition organizers, together with **CONFEPASO**, may decide on the proper dress for competition different from that used in International or World Cup Competitions.

**Paragraph 2.** All show and assistant personnel, including trainers, grooms, and any other person entering the ring or the pre-screening area, must follow the previously described dress code in regards to footwear, pants, shirt and head gear.

#### **Article 21**

The use of whips, crops, or spurs is expressly forbidden.

#### **Article 22**

It is absolutely necessary that the participants be free of disciplinary actions imposed by **CONFEPASO** or by the ruling Federation and/or Association of the country represented by him or her. Participation is also prohibited to horses disciplined for drugging and whose sanction is enforced by **CONFEPASO** or the member country that had imposed the sanction.

#### **Article 23**

It is the obligation of the competitors, their representatives, instructors, grooms and assistant personnel, to unconditionally abide by the orders and directives of the Management and the Judges, and they must exhibit good sportsmanship.

#### **Article 24**

The participants must accept the unappealable decisions of the Judges. If not, they will be subject to disciplinary actions that may be imposed by the event Organizers of the competition in which they were incurred, or those disciplinary actions could be exonerated by

**CONFEPASO** in agreement with a report presented by the Show Management.

**Paragraph.** In the case of the disciplining of a minor, he or she must be accompanied by his or her parents, guardian or representative at the time he or she is called for exoneration.

### **Article 25**

The competitors must receive the prizes they have won in the judges' circle, in a courteous and sportsmanlike manner. They may be accompanied by their representatives. If their conduct in the judges' circle is not appropriate, they will forfeit their assigned prize classification and they will be subject to the corresponding disciplinary actions.

### **Article 26**

Any assistance to the competitors once the class has begun is prohibited, except in the Little Junior ("Mini") categories or in case of accident or emergency.

**Paragraph.** In case of accident, and only in this case, will the judges be allowed to change the riding equipment or piece of riding equipment damaged or in bad condition as a result of the accident.

### **Article 27**

Those competitors who exhibit undisciplined behavior or disrespect for this Ruling will be banished from the judges' circle. The same holds true for the representatives or grooms who show obvious signs of undisciplined behavior or drunkenness, for which they will also be disciplined according to the prevailing articles of the **CONFEPASO** Rule Book.

### **Article 28**

It is mandatory that the competing participants riding Paso Horses, whether they be Paso Finos, Colombian Trocha Pura horses, Colombian Trote and Galope Reunido horses, or Colombian Trocha and Galope horses, be duly outfitted in accordance with the prevailing **CONFEPASO** rules.

**Paragraph 1.** Before entering the arena, the horses registered for

competition must take a test to verify their state of health and level of obedience.

**Paragraph 2.** Everything concerning health issues and the handling of the mounts must conform to the rules set forth by the health authority of the host country and by **CONFEPASO**.

# Chapter V

## DIVISIONS AND JUDGMENTS

### Article 29.

Male and female equestrians will compete separately according to their age and division. Horse show events will be classified according to the participants' age divisions noted below:

- |                    |   |
|--------------------|---|
| <b>Division 1</b>  | Little Junior Girl Riders (Mini-amazonas)<br>From age 4 up until the 6th birthday |
| <b>Division 2</b>  | Little Junior Boy Riders (Mini-jinetes)<br>From age 4 up until the 6th birthday   |
| <b>Division 3</b>  | Young Girl Riders (Amazonas Preinfantiles)<br>From age 6 to 8                     |
| <b>Division 4</b>  | Young Boy Riders (Jinetes Preinfantiles)<br>From age 6 to 8                       |
| <b>Division 5</b>  | Girl Riders (Amazonas Infantiles)<br>From age 9 to 11                             |
| <b>Division 6</b>  | Boy Riders (Jinetes Infantiles)<br>From age 9 to 11                               |
| <b>Division 7</b>  | Junior Girl Riders (Amazonas Junior)<br>From age 12 to 14                         |
| <b>Division 8</b>  | Junior Boy Riders (Jinetes Junior)<br>From age 12 to 14                           |
| <b>Division 9</b>  | Teen Girl Riders (Amazonas Juveniles)<br>From age 15 to 17                        |
| <b>Division 10</b> | Teen Boy Riders (Jinetes Juveniles)   |

From age 15 to 17

**Division 11** Young Woman Riders (Amazonas Aficionadas)  
From age 18 to 24

**Division 12** Young Man Riders (Jinetes Aficionados)  
From age 18 to 14

### **Article 30**

For the individual evaluation of each competitor, the judges will require the execution of various mandatory tests and other optional tests.

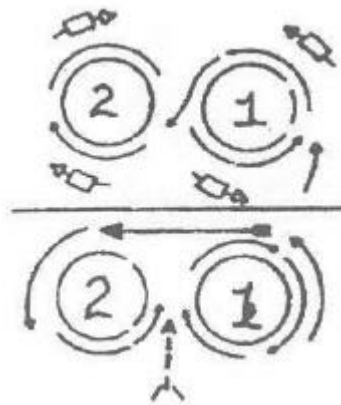
### **MANDATORY TESTS**

- 1. Theory Test:** This test is only given to those participants from the Junior Division and older. These riders will take a written test previously designed by the event Judges comprised of questions taken from the Equitation Rule Book or questions about horses, whenever there are guidelines issued on this topic. The Judges of the event will score the written test themselves.
- 2. Figure 8:** All the riders must have their horses execute a figure 8 around two poles set up beforehand for this purpose. The poles will be made of a solid material, bright yellow color, round shape and approximately 10 centimeters in diameter, at a height of approximately 2 meters each and set up at a distance of 3 meters between them. Humans will not be used in lieu of poles. The use of shrubbery, barrels and other ornaments is not allowed with the figure 8 test poles. It is also prohibited to place other ornamental objects in other locations around the show ring which obstruct the vision of the riders or their horses. Spinning in a circle around one of the poles in the figure 8 test, so to show off the reining ability of the mount, is a fault that must be penalized, and the competitor can be withdrawn from the class because it could give the impression of an advantage for the rider or the horse. This disqualification will not apply to the riders in the Little Junior (Mini) categories.

In this contest the competitors must make their horses execute two (2) figure 8's around the poles, making two turns (left-hand, right-hand, right-hand, then left-hand). These turns must be done twice (2 times) for a total of two figure-8's. Then they will proceed to one of the poles in a straight line to finally complete the last figure 8, halting their mount between the two (2) poles. (Refer to the diagram.)

In this test the judges will observe the softness of the hands, the application of aids in the turns with the balance of the body and the direction of movement to try to sustain the rhythm of the horse.

The rider will be penalized for allowing his or her mount to vary from the course, for using a direct rein or an indirect rein of opposition and for not keeping up the horse's pace, or for using exaggerated aids on the horse such as kicking, slapping the reins, etc.



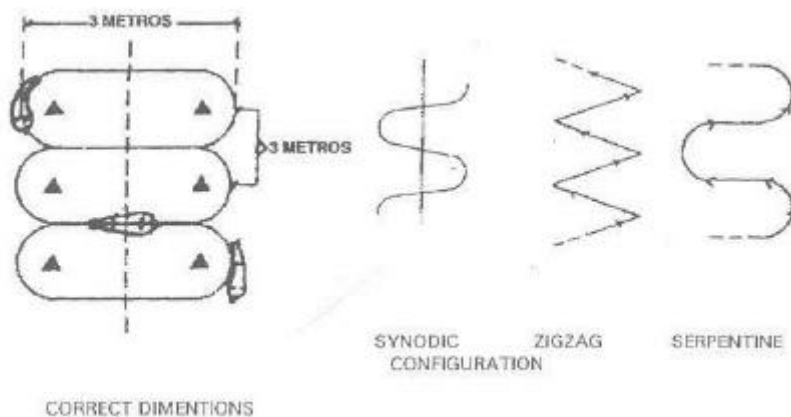
- 3. Backing Up:** Once the figure 8 test is completed, after halting the mount between the two poles, each competitor will be judged individually on making his or her horse back up a minimum of four (4) steps and a maximum of six (6) steps.

The competitor will be penalized if his or her mount does not back up in a straight line, moves its head excessively or opens its mouth. If he or she executes this task using anything but diagonal

movements, or if the horse does not raise and lower its legs when backing up, the participant will be penalized.

This will be evaluated on the smoothness of the command to halt, the rider's seat (in relation to his or her relaxed manner, balance, and adherence to the seat), the way the rider guides the horse backwards while being soft on the mouth, the evenness of the steps backward in a straight line, halting the horse completely and moving forward with smoothness, determination and impulsion.

4. **Serpentine:** After completing the back-up test, each competitor must do the serpentine test in the place indicated by the Judges. This test is done to determine how well the rhythm is sustained and which aids the competitor uses with his or her body to get the horse to change leads in the circles. When it is a two-gaited horse or a combination-gait horse, the test is performed in both gaits. The serpentine test consists of two types of movement across the ring: half-circles and straight lines. The half-circles are alternated with the straight lines connecting them. In the half-circle the horse's body should bend toward the center of the circle. Upon taking the curve, the horse must not break out of the pattern in successive digressions, in oblique zig-zag lines or in synodic configurations. (Refer to the diagrams.) The two-gaited mounts must execute this test first riding in one direction in one of the gaits, then returning in the other gait. The location of each half-circle may be designated by the placement of visual aids or obstacles so to guarantee that they are done correctly. It is recommended that the obstacles be painted bright yellow.

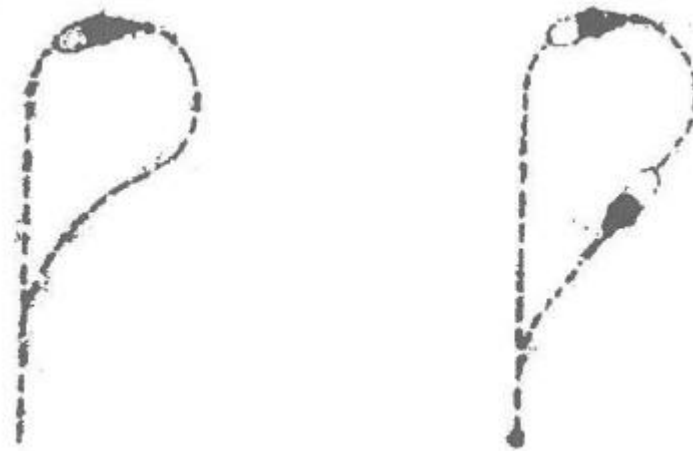


**5. Sounding Board or Hard Track:** Once the serpentine test is completed, the rider must make his or her mount go over a sounding board in both directions, trying to center the horse across the board. Each two-gaited horse must pass over the board in one direction executing one gait and return over the board in the other gait. The board will be placed at the ground level of the arena. If this is not possible, then there must be an access ramp. The sounding board must be made of a solid and compact material, with boards of high-quality wood or of plywood. It will be 15 to 20 meters long and 2 meters wide. The competitors will not be able to turn their horses on the board nor will they be able to step off the board. They must enter, make the complete ride, exit the board, then return to ride over it in the opposite direction. If this is not done, it will result in a loss of points or disqualification by the Judges. In this test, the Judges will watch for cues to the horse, the horse's ears, and the impulsion used to maintain the horse's pace, as well as the control exercised to keep the horse in a straight trajectory. Failing to maintain the pace, allowing the horse to veer from course during the ride and stepping off of the sounding board with a hind leg will result in penalization.

## OPTIONAL OR DIFFICULTY TESTS

Optional or difficulty tests may be required of those competitors who are tied according to the judges' estimation. These tests include:

- 1. Order to Halt:** The way the horse comes to a halt and starts back up again will be evaluated. The horse must halt by placing the hindquarters toward the center of gravity so that it appears to have come to a stop under bit and not pulled by the bit, then it must begin to move of its own accord in response to the slight cue of the rider, resuming its original speed, with most of the impulsion coming from its hindquarters. The transition to the halt, the rider's balance, and the positioning of the horse's hind legs during the exercise will be evaluated. After the halt, the judges may request two-gaited horses to resume movement using either gait.
- 2. Change of Mounts:** In this test the judges will ask the selected candidates to exchange horses. These participants will be given the opportunity to take one or two passes first to become familiar with their new mounts, and then they will follow the commands of the judges who may, at their discretion, ask the riders to perform any of the mandatory or optional tests. In international shows, the finalists will be obliged to do a change of mounts.
- 3. Changing Hands or Half-Turn:** This is an optional test that consists of changing direction while moving, turning away from the rail and coming back in the opposite direction along the same rail. Any participant whose mount loses its rhythm or breaks gait will be faulted. If the rider executes this test handling the reins using a leading rein and/or an indirect rein of opposition, this will also be penalized.



- 
- 4. Circles:** The rider must have his or her horse make several circles at least three (3) meters in circumference in one direction, and then followed by circles of the same size in the opposite direction.

The horse must maintain its momentum, resistance, agility, support, training and response to the rein throughout the test. In performing the circles, the judges will penalize the use of aids such as kicking, pulling on the rein, clucking, moving the elbows or the legs, etc.

- 5. Dismounting and Mounting:** To dismount, the rider can slide down from the saddle or use his or her stirrups. The size of the contestant must be taken into consideration. Before mounting again, the rider must check, and if necessary, readjust the chin strap and the cinch. The rider must gather up the reins in the left hand using very little pressure on the reins; stand diagonally by the side of the horse facing front; place his or her left hand on the horse's withers while holding on to the mane or the pommel; turn the stirrups toward his or her body using the right hand and placing the left foot in the stirrup; then placing the right hand on the opposite side of the saddle or on the front panel (the pommel or the horn) immediately afterwards, lift him or herself up to the saddle, straightening both knees; cross the right leg over the seat of the saddle, then ease down into the seat while placing the right

foot into the stirrup without looking down.

- 6. Untacking and Tacking:** In this test the judges will watch that the horse is untacked and tacked up again the right way and in the correct order. The untacking begins from the tail toward the head with first removing the crupper, if there is one. Then the cinch is unfastened and removed, and then the saddle pad is removed. The rider will then proceed to unfasten and remove the reins and the bridle. When tacking, the procedure is reversed, from the head to the tail, first replacing the bit and the reins, securing the horse with the reins, replacing the saddle pad and the saddle and tightening the cinch, then replacing the crupper and lastly, attaching the leadline (if there is one).

**Paragraph.** Riders under the age of 12 who are allowed to hold the reins in one hand with the hands apart, will not be faulted for doing it this way in the figure 8 or in the changing hands test.

# Chapter VI

## PASO HORSE EQUITATION

### Article 31.

Paso Horse equitation highlights the style, grace, and rhythms of the Paso horse and the special relationship between horse and rider. This event is judged 100% on equitation. The results achieved by the horse's efforts are no more important than the method by which they are achieved.

#### A) **Basic Position.**

The rider must at all times appear to be in complete and effective control, guiding the horse in the most appropriate way. Most important is that the horse and rider be completely synchronized.

#### B) **Seat.**

The correct seat is that in which the rider maintains his or her correct position while seeming natural and well-balanced, with the least amount of physical effort and without interfering with the movement and balance of the horse.

#### C) **Position of Arms and Hands.**

The arms should fall naturally without the elbows passing beyond a perpendicular line from the rider's shoulders. The reins should be held in one of the following ways:

1. One rein in each hand running from underneath the little finger upward with the bight of the reins hanging to the right side of the horse.
2. The reins should pass directly from the ring of the bit to between the little and ring fingers and they should be held down with the thumb. It is important for the ring

finger to secure the sides of the reins with the knuckle closest to the palm, and the fingers should close firmly but without tension. The bight of the rein should always fall to the right side. The hands must maintain a natural position, horizontal to the saddle, and the hands should convey softness, flexibility and control. The height at which the hands are held over the horse's withers is determined by the position of the head carriage of the mount. Nevertheless, an excessively high or low head carriage is undesirable. The hands should not go above or behind the head or the pommel of the saddle. The rider must make every effort possible to maintain a straight line from the elbow to the forearm and from the forearm to the hand, from the hand to the rein, and up to the ring of the bridle. The hands and wrists should remain flexible and not far apart from each other.

3. The rider may also hold both reins in one hand, preferably in the left hand; the other hand should also take the reins from over or underneath the first hand so that both hands have control of the reins, but the first hand should stay closed and the bight of the rein should always be draped over the right side. This is the appropriate way to do it while showing in the countries where they are in the habit of doing it this way. The other way (numbers 1 and 2) is acceptable for young riders up to twelve (12) years old.

**D) Position of the Head.**

The rider's head must be held straight at all times, with the chin up and looking forward (between the horse's ears).

**E) Position of the Back.**

The back should be straight, firm but not tense or stiff, with the shoulders straight.

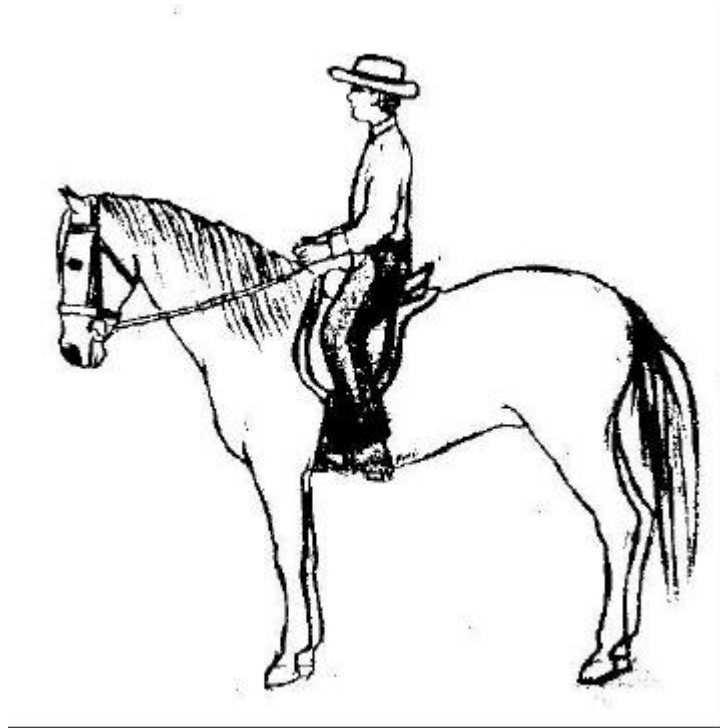
**F) Position of the Legs and Feet.**

The legs should fall naturally. The lower part of the leg

should be under the rider's body and not extended forward, or this will be penalized. The feet should stay parallel to the horse's body with the heels slightly lowered (approximately 1 inch). The ball of the foot should rest directly over the stirrup, with both feet exerting equal pressure on the stirrups. The hip and the shoulder should be aligned. The position of the foot must be natural (neither too far inward nor outward).

**G) Rider's Position when the Horse is in Motion.**

The rider's position when the horse is in motion should be natural, coordinated and in sync with his or her mount, keeping practically still at any gait. The ideal would be to draw an imaginary straight line from a side view down along the rider's head, shoulder and hip, perpendicular to the ground. The center of balance should be kept directly above the feet and ankles. The front of the arms should fall naturally from the shoulders to the hip bone and should appear flexible, never tight against the body, reaching forward and away from the body. The rider should seem relaxed, comfortable in the saddle, and without the upper part of the body moving from side to side. The rider must remain still in the center of the saddle at any gait performed by the horse without slipping backward over the cantle.



### **Article 32**

Once the horse show begins, the participants and their mounts will be under the sole authority of the judges. This means that no horse or rider may leave the arena without the permission of the judges. In order to safeguard the rights of the public, the judges must, personally or through the announcer as intermediary, explain the reason why they ordered a competitor to withdraw or be excluded from competition.

### **Article 33**

Once the horse show begins, the judges will organize the entrance of the competitors into the arena, one by one, to make it easier for the show announcer to announce the horses and riders according to the information noted on their respective entry forms. This announcement will be repeated each time a participant enters the ring to perform the individual figure 8 test and again after the event, to announce those who placed.

### **Article 34**

Each participant riding a two-gaited mount must perform the test in both gaits.

### **Article 35**

The individual testing begins with the figure 8 and ends after riding over the footbridge or sounding board.

### **Article 36**

Optional tests: These will be ordered by the Judges and executed by those participants who are tied.

**Paragraph.** These tests are not timed; the Judges will exercise this prerogative if the participants observe a reasonable time limit.

### **Article 37**

**The Judges will take the following qualities into consideration as they make their decisions:**

- A)** Appearance of the horse and rider.
- B)** Synchronization between horse and rider.
- C)** Ability and skill in the horse's performance.
- D)** Control, sureness and handling of the reins.
- E)** Concentration and seriousness.
- F)** Good sportsmanship and courtesy in the ring.
- G)** Decisiveness and courage.
- H)** Practical technical knowledge about the general characteristics of the horse and tack.

### **Article 38**

The Judges in this classification will take into consideration the following faults that may result in a loss of points in the scoring of the contestants:

- A)** Distraction, negligence and inattentiveness to the Judges' instructions.
- B)** Obvious roughness with one's mount.
- C)** Lack of technical knowledge.
- D)** Inadequate positioning of the back (the trunk of the body leaning forward or backwards).
- E)** Inadequate positioning of the hands (open or unstable).
- F)** Inadequate positioning of the feet (outward, forward,

- backward or too deep in the stirrups).
- G)** Rising out of the saddle while the horse is in motion.
  - H)** Taking the wrong turns in the circle test.
  - I)** Lack of stability or incorrect positioning of the head.
  - J)** Using exaggerated aids on the horse (kicking, rein slapping, clucking, etc.).
  - K)** Breaking gait.
  - L)** Performing the mandatory or optional tests incorrectly.
  - M)** Not changing hands correctly in the tests where the horse does turns or closed circles.
  - N)** Not using the necessary impulsion on the horse.
  - O)** Lack of good sportsmanship and courtesy in the ring.
  - P)** Not maintaining the proper gait or style of movement of the horse while riding will result in a loss of points for the rider.
  - Q)** Uneven stirrups, except in the Little Junior (Mini) categories.  
The proper way to measure the correct length of the stirrup leathers is from the base of the saddle where the cinch is attached up to the base of the stirrup.
  - R)** The loss of one or both stirrups.

### **Article 39**

The following are cause for disqualification:

- A)** Partial or total loss of control over the horse.
- B)** Proof of misbehavior against another rider.
- C)** Disobeying the Judges' orders.
- D)** Causing an unjustified delay in the competition.
- E)** Addressing the Judges in an inappropriate way.
- F)** Failing the theory test.
- G)** Abusing the animals.

**Paragraph.** The causes for disqualification established in Article 39 do not apply to the Little Junior (Mini) and Young Girl and Boy (Preinfantil) categories, but rather will be penalized. There are no causes for disqualification in these categories.

# Chapter VII

## JUDGES

### **Article 40.**

The judges must fundamentally base their evaluations on the performance, ability and quality of the young men and women riders as equestrians.

In making their decisions, they should not consider the quality, reputation or importance of the mounts that the equestrians ride in competitions.

### **Article 41**

The judges may permit a contestant to remain in the arena if he or she has incurred a disqualifying fault, depending on their estimation of the fault and the seriousness of it.

### **Article 42**

When explaining their faults to them, the judges should review the merits of the riders, making a distinction between the classified and the non-classified riders. The explanation should be done in a constructive and instructive way, detailing the reasons for each score.

### **Article 43**

The judges have complete autonomy to cancel an event, as well as a classification, when the quality of the competitors is unsatisfactory.

### **Article 44**

The events will begin when the announcer, under the orders of the Show Board, declares them closed to entries and open to judging. From this moment on no other competitor may enter the arena. An event will end when the Judge finishes assigning the results to the classified riders.

### **Article 45**

Participation in Equestrian Horse Shows held in any country affiliated with **CONFEPASO**, with the endorsement of its Federations

and/or Associations and under the auspices of the International Confederation of Paso Horse Breeders, will be evaluated by judges who have ample knowledge of horse shows and who are registered in the Horse Show Division of the Federation and/or Association of their country.

**Paragraph.** No Federation and/or Association affiliated with CONFEPASO may invite a Judge from outside the country whose name is not registered with the Horse Show Division of the Federation and/or Association of their home country in order to judge the World Cup (Mundial) or the International Horse Shows that they have organized.

#### **Article 46**

Those persons who have fulfilled the ethical, knowledge and general cultural requirements established by the Rules and their prevailing regulations on the judging of this type of competition, will be able to judge in the international horse shows.

**Paragraph.** A Judge must be an active and currently qualified member in order to participate. That is, he or she must not have resigned his or her membership, in writing, from the Federation and/or Association of their country, and there must not be any disciplinary actions imposed against him or her by these Federations and/or Associations which would nullify the exercise of his or her duties.

#### **Article 47**

The Horse Show Judge identification card is proof of the status and ability of a person in the exercise of his or her duty to judge the corresponding competitions. To act as a World Cup or International Judge in the World Cup or International Horse Shows held by **CONFEPASO** and its Federations and/or Associations, the owner of the identification card must be a member of the Horse Show Division of the Confederation.

This membership is a requirement before a judge's ID card, signed by the President, will be issued to them. It is the only credential needed to judge in the horse shows. The scores obtained in International Horse Shows decided by judges who do not fulfill this requirement will not be valid toward other competitions for riders registered in the international

circuit.

**Paragraph 1:** Periodic verification of the Judges' knowledge and performance in horse shows: Just as in other activities, it is absolutely necessary that the **CONFEPASO** Horse Show Division do a periodic knowledge and performance check on the Judges as often as appropriate for the type of activity. For this purpose, they will give regulatory written and practical knowledge and performance tests to the Judges registered to judge horse shows in the different divisions.

This procedure will be cause for a specific ruling to periodically verify the quality of the Judges, with the resulting cancellation of their membership in the Federation and/or Association Horse Show Division if they do not prove to be working for the improvement of the sport of horsemanship or maintaining technical levels of efficiency.

**Paragraph 2:** The Judges' Horse Show I.D. card can be cancelled for a judge's bad behavior or by a resolution issued by the Confederation, Federation and/or Association Board of Directors, after due consideration and by the same procedure by which they had granted the card.

#### **Article 48**

Appointment of Judges: To judge a World Cup or International Horse Show, the judges will be named in accordance with prevailing **CONFEPASO** regulations. They will be chosen from official lists of Confederate Federation and/or Association Active Registered Judges.

**Paragraph.** In case a judge is disqualified due to being a blood relative or close friend of a participant and/or his or her family, or if the competitor has been a riding student of the judge, an Alternate Judge will be appointed.

#### **Article 49**

Dress code for the judges:

- White straw hat with a black or white band
- White shirt with a tie
- Dark-colored suit
- Dark-colored leather boots or shoes

# Chapter VIII

## PRIZES

### Article 50.

The prizes and distinctions granted for the different classifications and places are as follows:

1. Champion	Tricolor Ribbon
2. First Place	Blue Ribbon
3. Second Place	Red Ribbon
4. Third Place	Yellow Ribbon
5. Fourth Place	Pink Ribbon
6. Fifth Place	White Ribbon
7. Honorary Mention	(For all riders)

### Article 51

Based on the points scored, the Horse Show Board of Directors will also grant a prize to the affiliate **CONFEPASO** country that obtains the most overall points.

### Article 52

To determine the scores of the World Cup Horse Show or of each of the International Horse Shows, and the scores of the **National Horse Shows**, refer to the following table:

<b>Gold Medal</b>	CHAMPION (A)	5 Points
<b>Silver Medal</b>	RESERVED CHAMPION (A)	3 Points
<b>Bronze Medal</b>	THIRD PLACE	1 Point

# Chapter IX

## DISCIPLINARY ACTIONS

### Article 53.

The International Confederation of Paso Horse Breeders, **CONFEPASO**, is the organization with the right to impose disciplinary actions on any person or lawful entity participating in a World Cup or International Horse Show organized or endorsed by **CONFEPASO**. It may discipline any person or entity for the following reasons:

- A. For performing acts intended to harm the normal course of the Horse Show or any public activity put on by **CONFEPASO**.
- B. For directly or indirectly offending any horse show or public activity authority, verbally or physically, as the result of any decision, explanation or interpretation made in the discharge of the duties of said authority or of any of his or her companions, inside or outside the arena, during the events or after them.
- C. For non-compliance with any of the obligations imposed by this Rule Book.
- D. For participating in any acts contrary to those established in the Rule Book or contrary to generally accepted rules of morality and good behavior.

### Article 54

All the **CONFEPASO** representative Federations and/or Associations in the different countries will be in strict compliance with all of the disciplinary actions imposed by **CONFEPASO**. Their non-compliance may result in their separation from **CONFEPASO**.

No **CONFEPASO** representative Federation and/or Association in the different countries will lift or in any way modify any disciplinary action imposed by **CONFEPASO**; this is within the right and jurisdiction of

**CONFEPASO.**

## **General Characteristics of the Horse**

Every rider, besides knowing how to ride, should have some basic knowledge of the horse.

In this section we present some of the horse's characteristics which should be kept in mind for the theory test that the judges will give to horse show participants beginning at the Junior level.

### **1. DESCRIPTION OF THE HORSE**

**Scientific Name:** Equus Caballus  
**Family:** Equine  
**Order:** Perissodactyl  
**Class:** Mammal  
**Type:** Vertebrate

An herbivore with an excellent memory, the horse has a very sensitive sense of hearing and of smell. Its cry, a whinny, expresses pleasure, anger, desire, fear and pain.

Its body is composed of a skeleton, joints, and muscles which are divided into the head, the neck, the trunk or barrel of the horse, and the legs.

### **THE HEAD**

The head should be proportional to the body, preferably small.

### **THE NECK**

The neck is formed by seven (7) vertebrae located between the head and the trunk. It is used for balance, since the horse's weight, shape and movement directly affect the balance of the horse.

### **THE TRUNK**

The horse's anatomical base is formed by eighteen (18) dorsal vertebrae, six (6) lumbar vertebrae, and between approximately eighteen (18) and twenty one (21) coccyges bones, eighteen (18) pairs of ribs and the sternum or breastbone, with their respective muscles and organs.

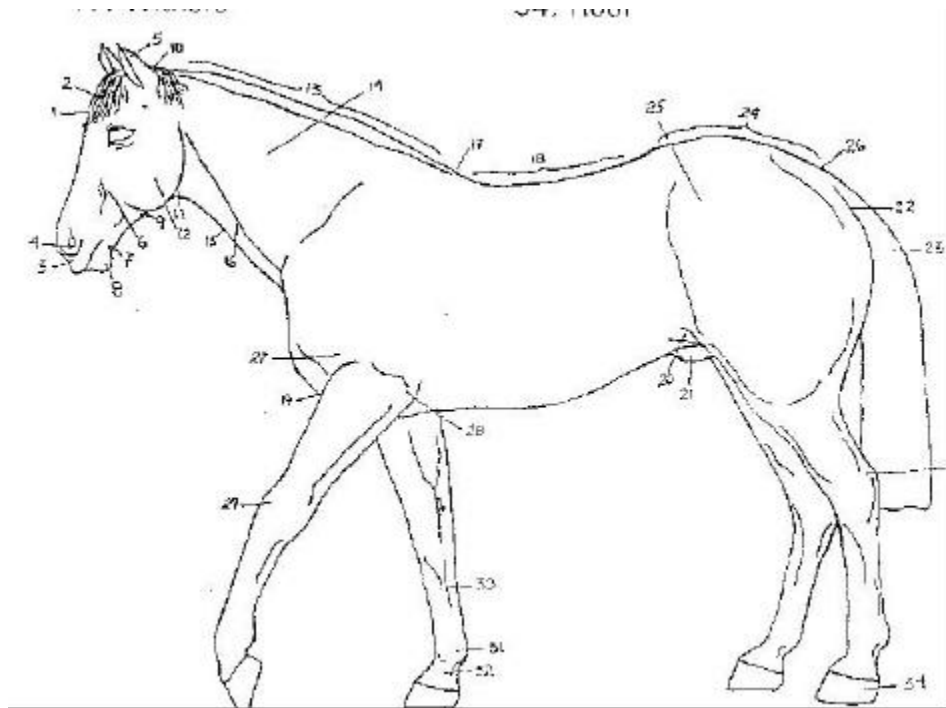
### **THE LEGS**

These are the horse's basic agents of impulsion and they include the front legs and the hind legs.

## **PARTS OF THE HORSE**

- |             |           |
|-------------|-----------|
| 1. Forehead | 18. Back  |
| 2. Forelock | 19. Chest |

- |                  |                          |
|------------------|--------------------------|
| 3. Muzzle        | 20. Flank                |
| 4. Nostrils      | 21. Genitals             |
| 5. Ear           | 22. Buttock              |
| 6. Cheek         | 23. Tail                 |
| 7. Chin          | 24. Croup                |
| 8. Under Lip     | 25. Point of Hip         |
| 9. Pharynx       | 26. Dock or Root of Tail |
| 10. Poll         | 27. Shoulder             |
| 11. Throat Latch | 28. Elbow                |
| 12. Jaw          | 29. Knee                 |
| 13. Crest        | 30. Cannon               |
| 14. Neck         | 31. Fetlock              |
| 15. Throat       | 32. Pastern              |
| 16. Jugular      | 33. Hock                 |
| 17. Withers      | 34. Hoof                 |

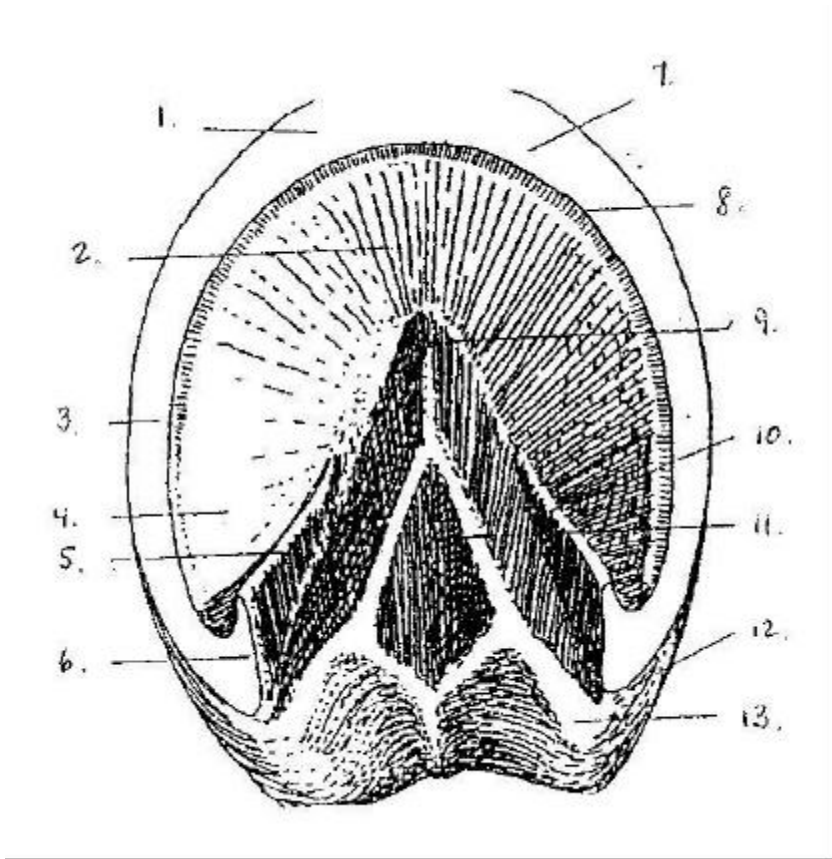


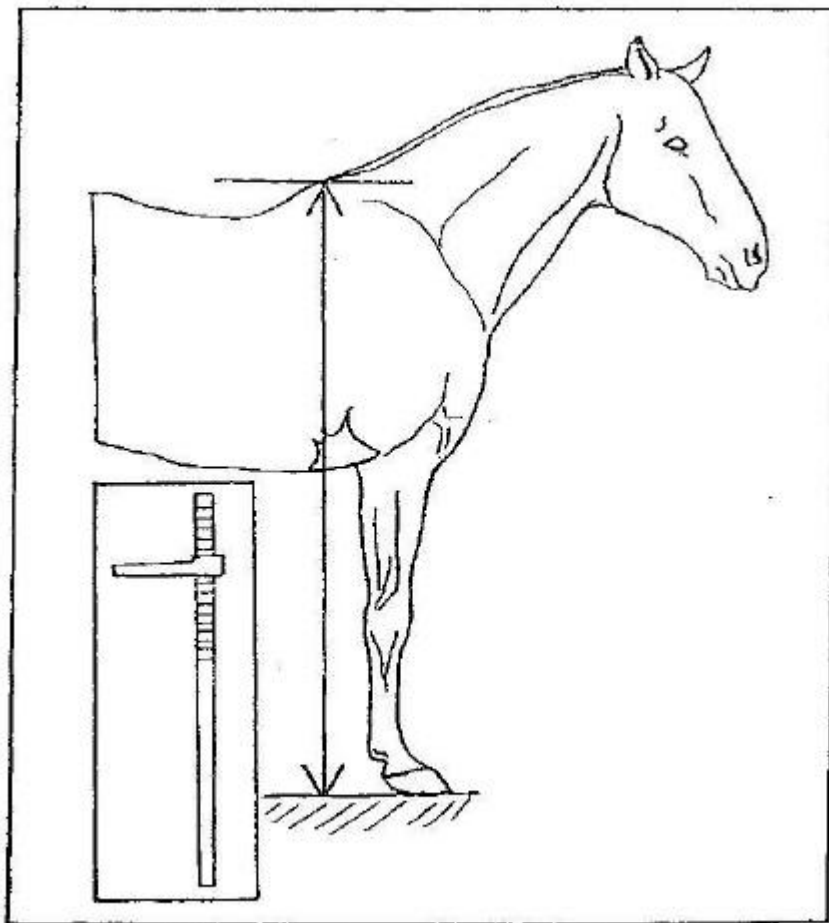
### PARTS OF THE HOOF

- |                   |                      |
|-------------------|----------------------|
| 1. Toe            | 7. Hoof Wall         |
| 2. Sole           | 8. White Line        |
| 3. Middle Section | 9. Point of the Frog |

- 4. Seat of Corn
- 5. Bar
- 6. Heel

- 10. Commissure
- 11. Cleft of Frog
- 12. Heel or Buttress
- 13. Bulb





### **HEIGHT OF THE HORSE**

The horse's height is measured from the ground to the withers, which is the highest point along the horse's spinal column. The measurement is taken with a special measuring stick consisting of a bar set perpendicular to a graded stick which then moves up and down the ruler. To determine the horse's height with this instrument, the ruler must be set flat on the ground. (Refer to the diagram.)

**Minimum Heights:** The following height standards have been established for participation in CONFEPASO horse shows:

- A-** For Colombian TROTE and GALOPE REUNIDO and Colombian TROCHA and GALOPE horses:

<b>STALLIONS AND GELDINGS</b>	
From 18 to 24 months old .....	1.31 meters
From 24 to 30 months old .....	1.34 meters
From 30 to 36 months old .....	1.35 meters
From 36 to 48 months old .....	1.37 meters
From 48 to 60 months.....	1.38 meters
Older than 60 months .....	1.40 meters

<b>MARES</b>	
From 18 to 24 months old .....	1.30 meters
From 24 to 30 months old .....	1.32 meters
From 30 to 36 months old .....	1.34 meters
From 36 to 48 months old .....	1.36 meters
From 48 to 60 months.....	1.37 meters
Older than 60 months .....	1.38 meters

**B-.** For Colombian TROCHA PURA and PASO FINO horses:

<b>STALLIONS AND GELDINGS</b>	
From 18 to 24 months old .....	1.29 meters
From 24 to 30 months old .....	1.32 meters
From 30 to 36 months old .....	1.34 meters
From 36 to 48 months old .....	1.35 meters
From 48 to 60 months.....	1.36 meters
Older than 60 months .....	1.38 meters

<b>MARES</b>	
From 18 to 24 months old .....	1.28 meters
From 24 to 30 months old .....	1.31 meters
From 30 to 36 months old .....	1.32 meters
From 36 to 48 months old .....	1.33 meters
From 48 to 60 months.....	1.34 meters
Older than 60 months .....	1.36 meters

## **PHENOTYPE**

It is the sum total of common hereditary characteristics that determines a species. In the case of the horse, these characteristics consist of the head, neck, chest, belly, croup, tail, proportions, height and color.

The weight, dimensions and size of the different parts of the body must be closely proportionate to give grace and beauty to the whole and order to their functions, so to achieve the ideal phenotype.

## **HORSES' AGE**

Equine chronometry is the study of horses' ages. ("Cronos" means time and "metry" means measurement.) We base our knowledge of a horse's age on the signs found in certain parts of the body, mostly the teeth, so that we can figure out the time passed since its birth until the time of its examination. Why is it so important to know the exact age of our horse?:

- a. To establish the comparative parameters of the relationship between size and age in the different stages of development for each horse.
- b. To be able to assign tasks appropriate to the age of each horse.

- c. To measure the horse's level of obedience according to its age.
- d. To correctly handle the topic of hygiene and health, since this will vary according to age.
- e. To handle the matter of reproduction.

The teeth are the only body parts whose gradual development and anatomical changes will determine almost exact dates for the horse's age, judging from the wear caused throughout the years.

To begin the examination of changes produced in the teeth by which we may judge the horse's age, we must know how many teeth horses have and how they are placed along the jawbone.

The horse has six (6) incisors, two (2) canines, six (6) baby or temporary molars and six (6) permanent molars on each jawbone, totaling 40 teeth in all.

Since mares do not have canines or tusks, they only have 36 teeth total. (There are exceptions to this rule.)

Depending on their position, the incisors have different names: the incisors in the front part of the jawbone are called first teeth or nippers; the next pair is called second or intermediate teeth; the following pair is called corners.

Before describing the formulas we must follow to determine the age of the horse, we will define a list of terms of great importance to our examination:

**Plane Surface:** This is the chewing surface that comes into contact with one or more teeth from the opposite jawbone.

**Wear:** The crown of the tooth on the plane surface has a hollow cavity called a dental cup which has a front and back border; the grinding down of these borders is what we call wear.

**Bite:** This is when each tooth makes contact with the corresponding tooth on the opposite jawbone.

**Swelling:** We will use the term swelling to describe the state of the gums when the permanent teeth begin to exert pressure on the milk teeth to eventually replace them.

The first set of incisors is called milk teeth and the second set is permanent teeth. One can tell the difference between them because the milk teeth show small grooves in front and they seem to be separated from the root by a depression called a neck joining the root to the crown. The permanent teeth do not have these characteristics.

When the foal is born it has no teeth; the first four (4) teeth or nippers usually erupt between six (6) and twelve (12) days, although they may not appear until thirty (30) days later.

- Between 30 and 40 days the second teeth appear.
- Between the 3rd and 10th month the third and final set of temporary teeth appear.
- In the 10th month the nippers show wear.
- At 12 months the second incisors show wear.
- At 18 months the last incisors show signs of wear and the first permanent molars are cut.
- At 24 months the second set of permanent molars erupts.
- At 27 months the nippers begin to swell.
- At 30 months the nippers begin to shed.
- At 36 months the nippers are replaced by permanent incisors and the second set begins to swell.
- At 42 months the second set shed.
- At 48 months the second set are replaced by permanent teeth and at 52 months the last set swell and the canines are cut in male horses.
- At 54 months the last set are shed.
- At 60 months the last set are replaced.

**NOTE:** up until this time the horse is considered to be a colt or a filly.

- At 72 months the permanent nippers show wear.

- At 7 years the second set of incisors show wear and the last upper set show a notch called a dovetail.
- At 8 years the last set are worn down.
- At 8 years the last lower set show signs of wear.
- At 9 years the upper nippers show wear.
- At 10 years the second upper set show wear.
- At 11 years the last upper set show wear.

It is very important to point out that the plane surface of the tooth is elliptical until age 4, rounded until age 9, triangular up to about 13 years of age and biangular at 18 years and above.

In a young horse the closed jaw forms a semi-circle; as the horse gets older, this semi-circle takes on a progressively sharper angle over the years as the horse ages.

**Characteristics of the Older Horse:** When a horse grows old the head comes to look sad and bent down, the flesh loses its elasticity, the bones jut out more, the hollows under the eyes become deeper, the lips get more wrinkled and sometimes the color of the skin even changes.

**Defects in the Horse's Teeth:** The rules to determine the horse's age have some exceptions: the dental surface is worn more rapidly in some horses than in others due to climate or feeding. A horse can have an underbite or an overbite.

**Underbite:** The lower row of teeth juts out farther than the upper row.

**Overbite:** The upper row of teeth juts out farther than the lower row.

### 3. DESCRIPTION OF THE PASO HORSE

The horse that arrived in the New World in the 15th century is basically the prototype for the Paso Horse; not only are Pasos distinguishable by their characteristic way of walking, they all belong to the same phenotype. The Paso Horse is characterized by the symmetry of its parts. It is well-shaped, elegant and well-proportioned.

**Head:** The head should be in good proportion to the rest of the body, with a wide forehead, and a strong, well-defined jaw line. The eyes are large, dark and widely-spaced, expressive and attentive, and they do not show any white around the edges. The profile should be straight, and the ears should be small, narrow, well-placed, alert, wide at the base and curved inward at the tip. The lips should be firm, of even length, and the nostrils should be large and dilatable.

**Neck:** The neck should be medium in length, muscular but flexible, arched in its upper portion and straight in its lower portion, full, robust, and it should join the body neatly. The mane is abundant, with straight or wavy hair of a fine, silken texture.

**Body:** In its front section, the horse should have high, long and muscular withers. The withers should be at the same height from the ground as the croup. The chest should be long, deep, wide and muscular, with moderately long, wide, graceful and muscular shoulders. In the midsection, the back should be short, solid, wide and straight. The top line should be proportionally shorter than the underline. Along the top, the croup should be straight, wide and strong. The rump should be full, round and muscular, sloping slightly from the horizontal line, and with strong hocks. The tail should be set moderately high, with luxuriant, long, fine, abundant hair. It should be elevated and horizontal forming an arch when the horse is in motion.

**Legs:** The legs should be long, moderately muscled, and perfectly plumb. The knees should be ample, straight, free-moving, covered by a fine skin and free of any injury. The hocks should be straight, although a small amount of proximity between them is acceptable. The cannon should be moderately short, fine, clean, and with strong, well-defined tendons. The fetlocks should be round, ample and perfectly aligned. The pasterns should slope backward at approximately 45 degrees and the hooves should be proportionate to the body, smooth and solid.

**Proportions:** The Paso horse bloodline is characterized by the horse's proportions. The height of the withers measured from the ground should be equal to the height of the croup. The distance from the fetlock to the bottom of the horse's barrel should be equal to the

distance from the lower part of the barrel to the withers. The distance from the point of the shoulder to the withers should be equal to the distance from the withers to the point of the hip and then to the farther point of the rump.

**Colors:** Every equine color is acceptable with the exception of the following disqualifying patterns:

**Leg Markings:** When the color marking of the horse's limb exceeds the perimeter of the transversal plane where the arm or the hock meets the lower leg, it cannot compete. This can be double-checked at the fold where leg joint bends.

**Broken Color:** When the front or hind limbs have a dapple or non-solid pattern, the color must not touch the joint at the forearm or hock, or just as in the ruling in the preceding paragraph, the horse cannot compete. It is generally understood that the color on the legs begins at the coronet band.

**Color on the Body:** With the exception of the head area, if there are white markings on the body over a rosy-colored background, the horse will be barred from competition.

**Markings on the Face:** When the markings on the face touch the edge of either eyelid, the horse cannot compete.

**White Markings on Both Nostrils and Both Lips:** When the white color on the face touches in any way or goes beyond the edge of both nostrils and both lips, it is prohibited from competing.

#### **4. THE DIFFERENT GAITS OF THE PASO HORSE**

##### **THE PASO FINO:**

This is the movement characteristic of the Paso Horse such as the Paso Fino. The displacement of the horse's movements is made by lateral forward motions. The sequence of the hoof beats in the transition between lateral leg pairs or bipeds is successive and alternating, marking two beats with each pair to complete four stages. That is, the

hind foot of one side is followed by the front foot of the same side, and then the hind foot of the opposite side is followed by the front foot of this same side. In this process, the horse has 8 supporting movements, typified by a triple hind support, a double diagonal support, a triple front support, a double lateral support, and then, in a mirror image of what preceded, a triple hind support, a double diagonal support, a triple front support, and a double lateral support.

During this sequence, the pause between the strikes of the lateral and diagonal are equidistant. It is this equal cadence that is the basic characteristic of the Paso Fino gait and that which distinguishes it from other gaits. Musical to the ear, it translates into rapid and equally spaced movements in a 1-2-3-4 cadence. When the horse is at its top performance, it seems unified and rhythmical, moving its legs smoothly and elastically as the feet meet the ground, projecting itself at an evenly-paced cadence and speed, absorbing the motion in the back and the hind quarters, exhibiting the least amount of lateral and vertical movement possible and in a constant line without any up-and-down movement, making a comfortable ride for the equestrian and making both, horse and rider, seem as one melded entity controlled by the reins and the bit.

#### **THE COLOMBIAN TROCHA PURA:**

This is the typical gait of some horses, measured in a rhythmical and harmonious tempo but in four uneven beats, identified by the sound produced by the four beats when the sequence of the cycle is performed. Its sound follows a 1-1-1-1 rhythm.

#### **THE COLOMBIAN GALOPE:**

This is a movement of forward diagonal propulsion in three beats: the first stage begins with the striking of one hind leg; the second stage is taken by the opposite hind leg and the foreleg diagonal to it; then the third stage is completed when the last foreleg hits the ground. This canter gait sounds like a 1-2-3 beat.

In the three-beat canter, the switch from trot to Galope or from the Trocha gait to the Galope should be a very smooth transition for the rider despite the obvious variation in the two gaits.

At a run the horse is carried by impulsion from the hind end or train, and the run is produced by a four-beat movement.

### **THE COLOMBIAN TROTE:**

This is a movement described by successive and alternating diagonally-paired leg positions or bipeds executed in two beats, which produces a striking sound when making contact with the ground. This sounds like a 1-2-1-2 beat.

## **5. BASIC DEFINITIONS RELATED TO THE PASO HORSE MOVEMENTS**

<b>Gait</b>	Any of the manners in which a horse moves.
<b>Two-gaited</b>	Any horse combining two characteristic gaits (Trote and Galope, and Trocha and Galope).
<b>Single-gaited</b>	Any type of horse known for having one gait (Paso Fino and Colombian Trocha Pura).
<b>Harmony</b>	A pleasant combination of sound and movement pleasing to the ear and to the eye.
<b>Beat</b>	The generic name given to the strike of a hoof hitting the ground when the legs are in motion.
<b>Paired Limbs or Bipeds</b>	The combination of two limbs associated by their placement in relation to an imaginary axis that divides the horse into two lateral sections. These are different from "trains" because the bipeds are formed by a foreleg and a hind leg.
<b>Diagonal Bipeds</b>	These consist of a foreleg and hind leg from different sectors along the longitudinal axis (opposite sides).

<b>Cadence</b>	The speed of the rhythm represented by the number of beats per unit of time.
<b>Lateral</b>	These are the two limbs that compose the biped, found in the same lateral sector defined by the previously mentioned longitudinal axis.
<b>Limb</b>	A term denoting any extremity of the horse; each of the horse's legs.
<b>Rhythm</b>	The periodic and harmonious occurrence of consecutive sounds produced by the horse's limbs in motion; the timing between one movement and another.
<b>Stage</b>	Stage refers to each of the instances or basic sequences achieved when observing the horse's limbs in motion.

There are four basic stages in the movement of any limb:

- a) **Impulsion.** The movement when the limbs execute the action of impetus and begin to move.
- b) **Elevation.** As its name indicates, this refers to the movement beginning from the raising of the hoof from the ground up to the highest point the limb can reach.
- c) **Displacement.** This is the limb's forward motion on a horizontal plane.
- d) **Support.** This is the contact the hoof makes when it reaches the ground.

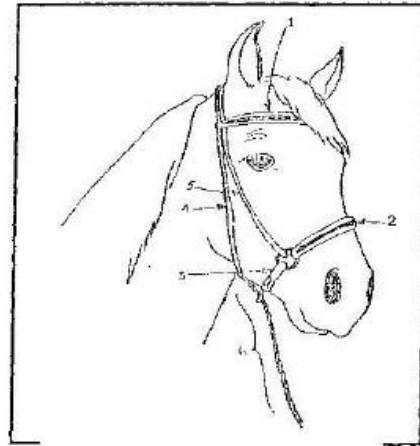
<b>Train</b>	The combination of two limbs defined by their placement along the spine of the horse in relation to an imaginary transversal axis.
<b>Front Train</b>	The combination of two limbs placed in

relation to the axis that cuts across the horse's spine in the front (both forelegs).

**Rear Train**

The combination of limbs that, in relation to the axis that cuts across the horse's spine, are found in the rear sector of the front cross-section (both rear legs).

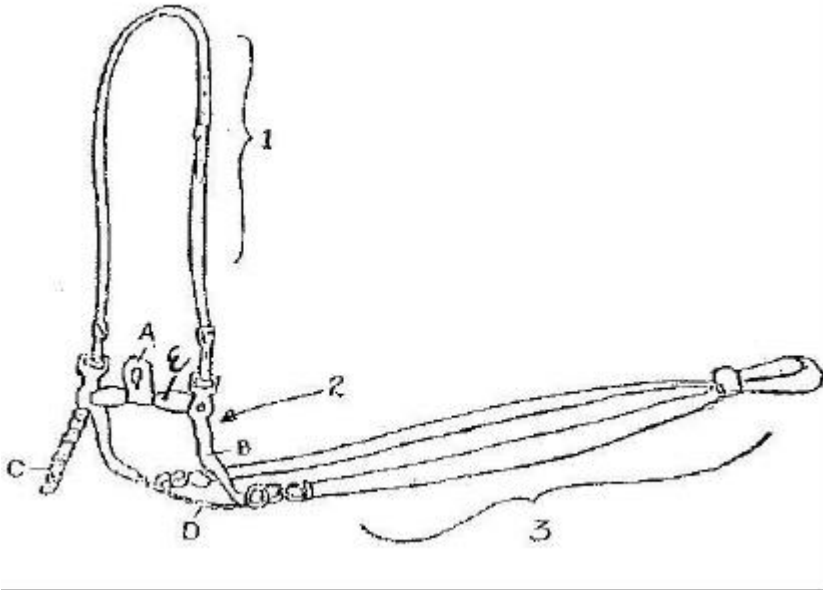
## PARTS OF THE TACK



### JAQUIMA

1. Browband
2. Bosal
3. Chin Strap
4. Throat Latch
5. Headpiece
6. Leadline

## BRIDLE



1. Headstall
2. Bit
  - a) Spoon
  - b) Shank
  - c) Chin Strap
  - d) Guide
  - e) Spade
3. Reins

## SADDLE

1. Pommel
2. Seat
3. Skirt
4. Stirrup Leather
5. Stirrup
6. Crupper
7. Cinch Strap
8. Cinch
9. Flap
10. Pad
11. Cantle

